

ruck.eu
VENTILATOREN



LOT6

2018

ec

technology



aeroefficiency

PRODUCT RANGE

2017

TUBE FANS



ETAMASTER...E / ...M / ...EC

5.700 m³/h

- Highest aerodynamic efficiency through computer optimized, three-dimensionally shaped impeller and stator blades
- Energy saving, steplessly controllable EC motors
- In a new version with asynchronous motors (EM...E)
- With 3-step AC motors
- The motor is protected in the hub area and does not influence the air flow
- Fast and easy installation with the help of the integrated mounting bracket
- Corrosion-resistant plastic housing



ETALINE...EC / ...D

20.220 m³/h

- High efficiency diagonal fan
- Three-dimensionally shaped impeller and stator blades.
- Energy saving EC motors or asynchronous three-phase motors
- Motor is protected in the hub area
- Casing made out of plastic, galvanized steel sheet or aluminum



ETALINE...M / ...E

13.940 m³/h

- High efficiency diagonal fan
- Three-dimensionally shaped impeller and stator blades.
- Voltage controllable or 3-step AC motors
- Motor is protected in the hub area
- Casing made out of plastic, galvanized steel sheet or aluminum



RS / ...EC

1.990 m³/h

- Steplessly controllable EC motors
- Voltage controllable AC motors
- High quality steel sheet housing, RAL 7035 (light grey) powder coated
- Backward curved centrifugal impeller

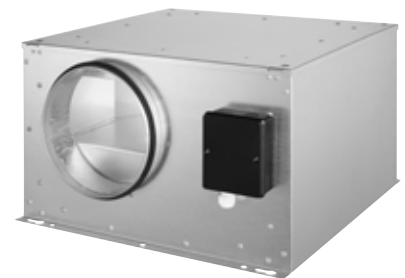


EMIX...M / ...EC

3.240 m³/h

- Sound insulated housing made out of galvanized steel sheet
- Built-in ETAMASTER Diagonal fans, with the highest aerodynamic efficiency
- Energy saving, steplessly controllable EC motors
- With 3-step AC motors
- The motor is protected in the hub area and does not influence the air flow

NEW



ISOR / ...EC

4.480 m³/h

- Fully insulated housing
- With integrated EC motors, steplessly controllable
- With voltage controllable AC motors
- Swing-out fan unit
- Backward curved centrifugal impeller

EXTRACT FANS



NEW

MPS...EC

6.245 m³/h

- For fat impregnated kitchen exhaust air, up to 120°C
- High efficiency EC motors
- Motor outside the air stream, acc. VDI 2052
- Double wall housing, with thermal insulation
- Integrated grease pan with condensate drain
- Variable discharge direction
- Backward curved centrifugal impeller



NEW

MPS...E /...D

10.400 m³/h

- For fat impregnated kitchen exhaust air, up to 120°C
- Motor outside the air stream, acc. VDI 2052
- With voltage or frequency controllable AC motors
- Double wall housing, with thermal insulation
- Integrated grease pan with condensate drain
- Variable discharge direction
- Backward curved centrifugal impeller



NEW

MPC...EC T

6.710 m³/h

- Motor outside of air stream, acc. VDI 2052
- High efficiency EC motors
- Max. medium temperature 80°C
- Removable side walls for variable discharge direction
- Integrated grease pan with condensate drain
- Double wall housing, with thermal insulation
- Backward curved centrifugal impeller



NEW

MPC...E / ...T / ...D T

15.750 m³/h

- Motor outside of air stream, acc. VDI 2052
- Max. medium temperature 80°C
- Removable side walls for variable discharge direction
- Integrated grease pan, with drain
- Double wall housing, with thermal insulation
- With voltage or frequency controllable AC motors
- Backward curved centrifugal impeller



NEW

MPC...E / ...D /...EC

16.300 m³/h

- Max. medium temperature 80°C
- Three possible discharge directions
- Double wall housing, with thermal insulation
- High efficiency EC motor
- With voltage or frequency controllable AC motors
- Backward curved centrifugal impeller



MPX

4.390 m³/h

- Affordable extract fan
- Motor outside the air stream, acc. VDI 2052
- Max. medium temperature 80°C
- Single wall housing with integrated mounting bracket
- Voltage controllable AC motors
- Housing bottom plate designed as a grease pan

DUCT FANS



NEW

EMKI...EC

6.400 m³/h

ELKI

10.050 m³/h

KVRI / ...EC

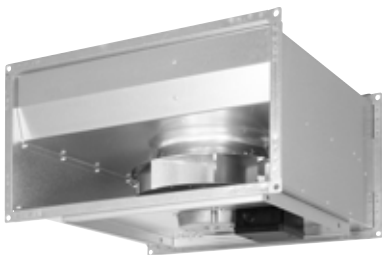
11.505 m³/h

- With high efficiency ETAMASTER diagonal fans
- With efficient EC-motors
- Sound optimized housing
- Removable inspection cover

- Integrated ETALINE diagonal fan
- With voltage controllable AC motors
- Sound optimized housing made out of galvanized steel sheet
- Removable inspection cover

- Sound insulated housing
- In EC or AC version
- Swing-out fan unit for cleaning and maintenance
- With peripheral, 20 mm wide standard flange
- Backward curved centrifugal impeller

ROOF FANS



KVR / ...EC

12.460 m³/h

DHA/...P

900 m³/h

DHA...ECP/...EC CP

1.370 m³/h

- With integrated, steplessly controllable, EC motors
- With voltage controllable AC motors
- Swing-out fan unit for easy cleaning and maintenance
- With peripheral, 20 mm wide standard flange
- Backward curved centrifugal impeller

- Horizontal discharge
- AC-motors, voltage controllable
- With device switch (DHA...P)
- Weather resistant plastic ASA, RAL 7012
- Swing-out fan unit
- Backward curved centrifugal impeller

- Horizontal discharge
- Efficient, steplessly controllable EC motors
- Constant pressure control (DHA...EC CP)
- With device switch
- Weather resistant plastic ASA, RAL 7012
- Swing-out fan unit
- Backward curved centrifugal impeller

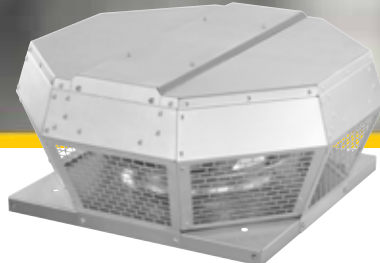
ROOF FANS



DHA/...P

11.950 m³/h

- Horizontal discharge
- AC motors, voltage controllable
- With device switch (DHA...P)
- Housing made out of weather resistant aluminium AlMg3
- Swing-out fan unit
- Backward curved centrifugal impeller



DHA...EC/...ECP

16.280 m³/h

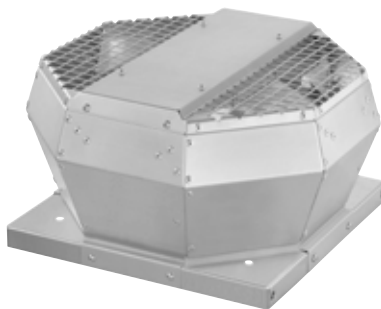
- Horizontal discharge
- Energy efficient, steplessly controllable EC motors
- With device switch (DHA...ECP)
- Housing made of weather resistant aluminium AlMg3
- Swing-out fan unit
- Backward curved centrifugal impeller



DVA/...P

10.960 m³/h

- Vertical discharge
- AC motors, voltage controllable
- With device switch (DVA...P)
- Housing made of weather resistant aluminium AlMg3
- Swing-out fan unit
- Backward curved centrifugal impeller



DVA...EC / ...ECC

14.115 m³/h

- Vertical discharge
- Energy efficient, steplessly controllable EC motors
- Integrated constant pressure control (DVA...ECC)
- Housing made of weather resistant aluminium AlMg3
- Backward curved centrifugal impeller



DVA...ECP / ...ECCP

14.115 m³/h

- Vertical discharge
- Energy efficient, steplessly controllable EC motors
- Integrated constant pressure control (DVA...ECCP)
- With device switch
- Housing made of weather resistant aluminium AlMg3
- Backward curved centrifugal impeller



DVN / DVNI

15.300 m³/h

- For extract of fat kitchen exhaust, up to 120°C
- Motor outside the air stream (VDI 2052)
- Sound insulated housing (DVNI) made of weather resistant aluminium AlMg3
- Integrated grease pan, with drain
- AC motors, voltage or frequency controllable
- Swing-out fan unit
- Backward curved centrifugal impeller

RECUPERATIVE HEAT RECOVERY



NEW

ETA K...F

3.200 m³/h @ 150 Pa

The ultracompact ETA K...F device is suitable for ceiling mounting in office buildings, restaurants, shops or cafes.



NEW

ETA K...H

2.750 m³/h @ 150 Pa

The ETA K...H, with horizontal air connections, is suitable for installation in the technical room, and with appropriate accessories also for outdoor installation.

The ETA KOMPAKT and the ETA CASE series are equipped with a highly efficient counter cross heat exchanger and a heat recovery rate of up to 90%. Heat recovery is already equipped in the standard version with a bypass for free night cooling in summer or de-icing in winter. All devices have a factory tested microprocessor control integrated. The use of highly efficient EC fans is obvious.



NEW

ETA K...V

2.750 m³/h @ 150 Pa

The ETA K...V compact ventilation units, with vertical air connections, are the ideal solution for installation in the technical room with their small floor space need.



NEW

ETA CASE

8.750 m³/h @ 300 Pa

The ETA CASE device series sets new standards in high performance. As a modular concept, the ETA CASE represents an extension of the ETA K series, at considerably larger air flow rates. Thermally decoupled frame structure. The counter cross flow heat exchanger with bypass and recirculation damper makes possible a need-based ventilation with low energy consumption.

REGENERATIVE HEAT RECOVERY



NEW

ROTO K...H

9.550 m³/h @ 200 Pa



NEW

ROTO K...V

3.480 m³/h @ 200 Pa

ROTO K...H with horizontal air connections can be installed in technical rooms, but, with the appropriate accessories, is also suitable for outdoor installation.

The compact construction with the vertical air connections offers flexible installation possibilities.

The ROTO KOMPAKT series has a built-in rotary heat exchanger with a heat recovery rate of 80%.

The humidity recovery of 60% ensures a comfortable room climate in winter as well. Built-in are EC fans with pressure and volume flow control.

COMPACT EXTRACT AND SUPPLY UNITS



SL

6.560 m³/h @ 200 Pa

The extract and supply units of the SL ranges are used for applications with airflow rates between 400 m³/h and 7.000 m³/h. The integrated control of the air supply units allows the connection of an extract unit for a demand-oriented ventilation system.



NEW

FFH...EC

1.120 m³/h @ 150 Pa

Air supply units with electric heating. The compact design makes the new FFH range stand out. Equipped with EC motors and an integrated control, it is also easy to install.



ruck Ventilatoren GmbH

Max-Planck-Str. 5
D-97944 Boxberg

Tel. +49 (0)7930 9211-300
Fax +49 (0)7930 9211-166

www.ruck.eu
info@ruck.eu

